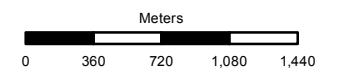
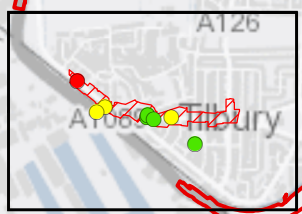
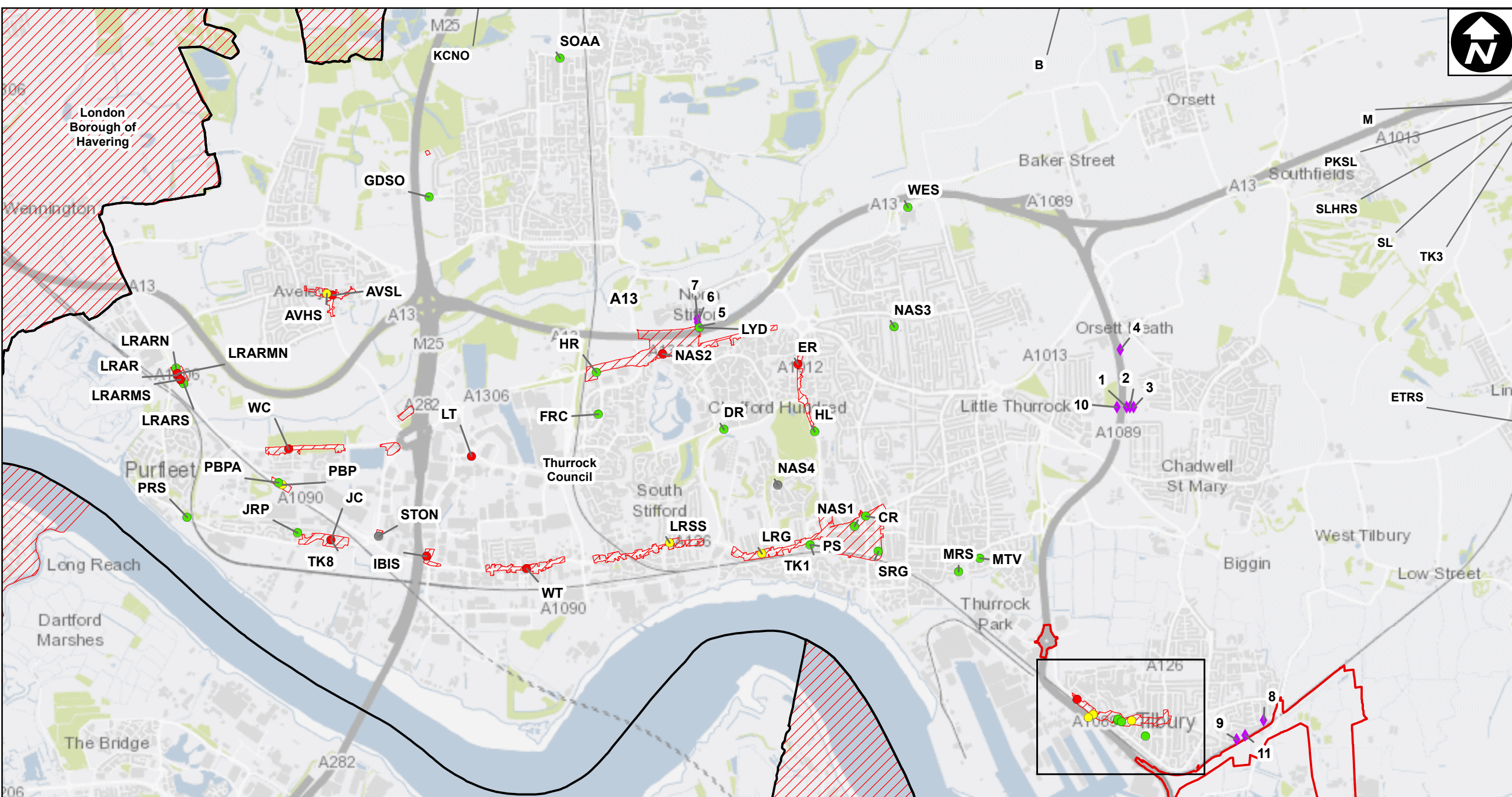
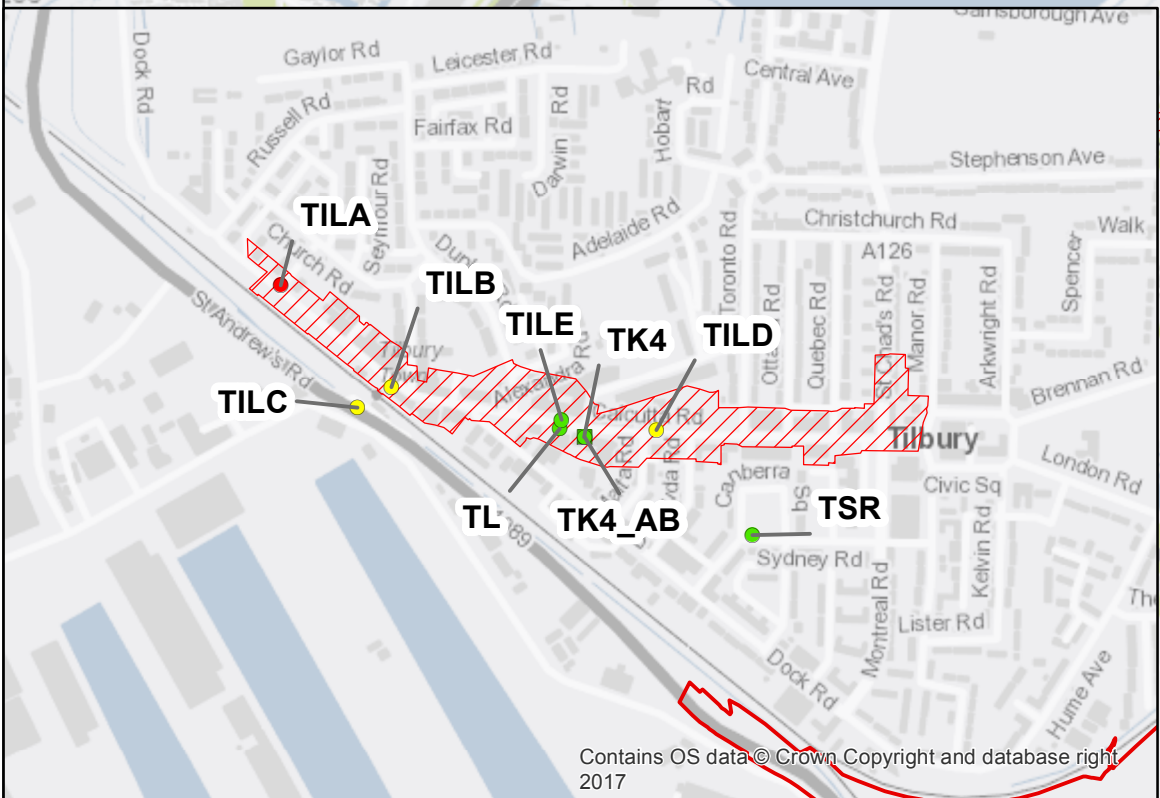




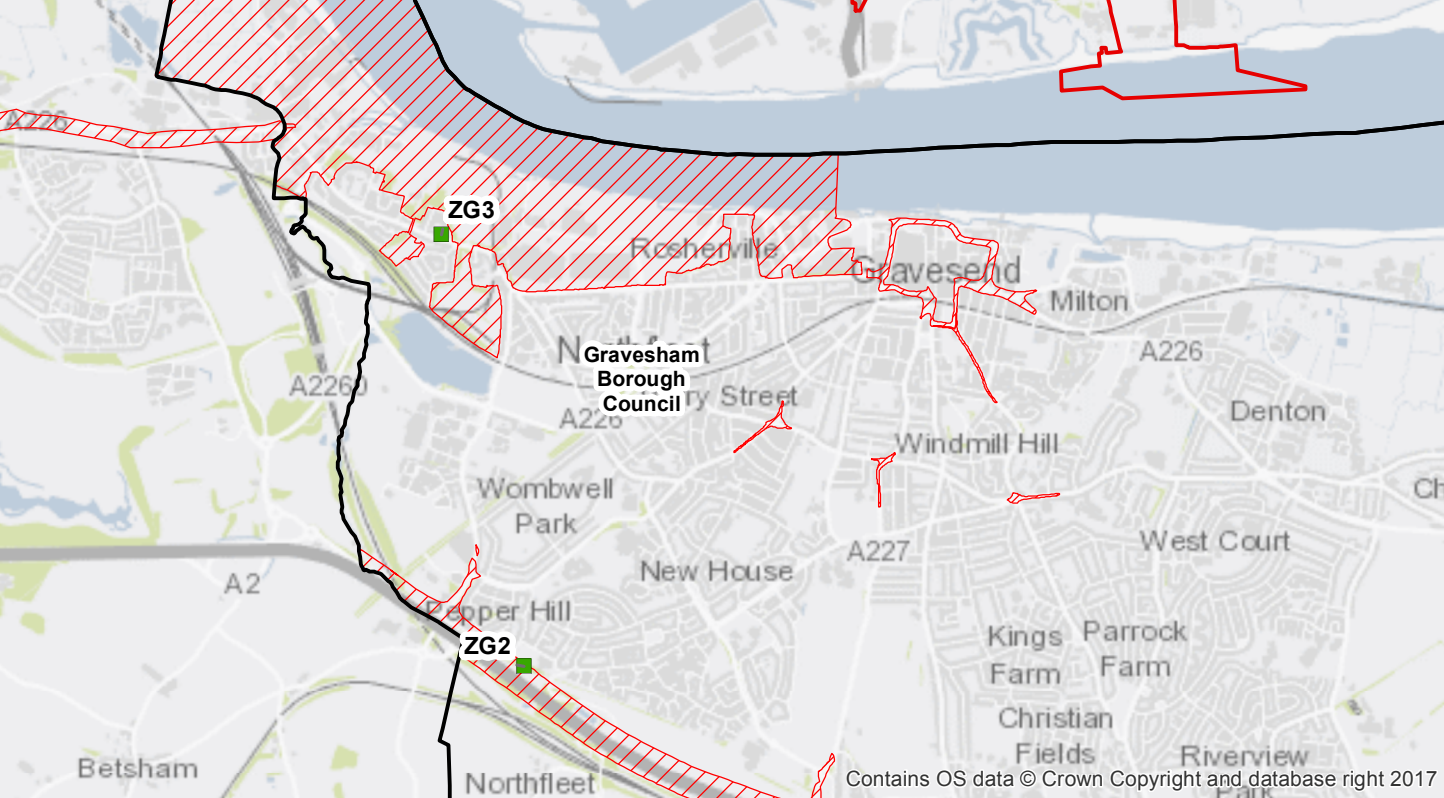
- Continuous Monitoring Sites**
- Annual Mean NO₂ Concentration (2016)**
- < 36 µg/m³
 - 36 to <40 µg/m³
 - => 40 µg/m³
- Diffusion Tube Monitoring Sites**
- Annual Mean NO₂ Concentration (2016)**
- No Data
 - < 36 µg/m³
 - 36 to <40 µg/m³
 - => 40 µg/m³
 - ◆ Atkins Diffusion Tube Survey Locations
- Air Quality Management Area
- Order Limits
- Local Authority Boundary



Contains Ordnance Survey data © Crown copyright and database right 2013.



Contains OS data © Crown Copyright and database right 2017



Contains OS data © Crown Copyright and database right 2017

Atkins Limited ©
Consulting Engineers
The Hub,
500 Park Ave,
Bristol,
South Gloucestershire,
England,
BS32 4RZ
Tel: +44(0)1454 662 000
www.atkinsglobal.com



AIR QUALITY MONITORING SITES AND AQMAS

Sheet Size A3	Original Scale 1:40,000	Designed / Drawn FLD	Checked RR	Authorised SH
		Date 13/10/17	Date 13/10/17	Date 13/10/17
Drawing Number Figure 18.3				Rev 00